



ISLAND MARINA

16° 46' 506" S 179° 20' 037" E



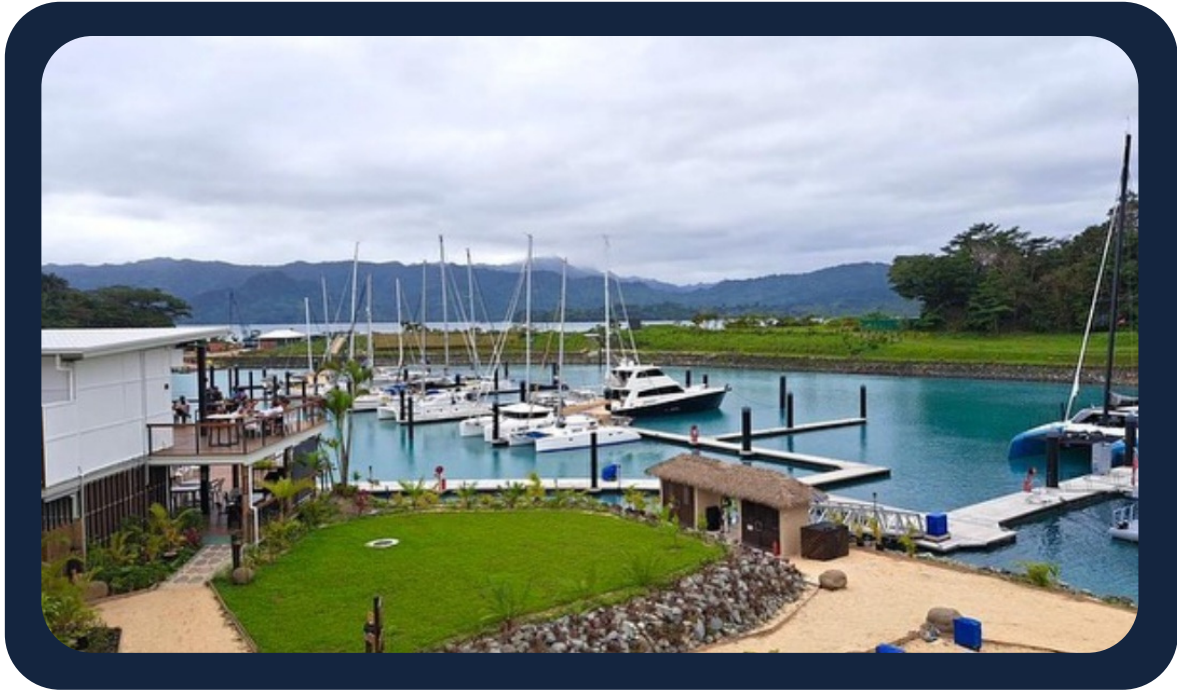
Pre-Arrival Information

Destination

Nawi Island Marina, Savusavu FIJI

January 2024

NEXT 



CONSIDER THIS YOUR INVITATION

Ni Sa Bula Re (Hello and Welcome)

Nawi Island Marina is an exclusive and luxurious destination private island marina, where everything is centered around you and your needs.

Nestled in Savusavu Bay, on Fiji's second largest island of Vanua Levu.

There's nothing quite like the dramatic coastline, crystal clear waters and the friendliness of the North.

Thank you (vinaka) for choosing to stay with us. We are here to make your arrival into Savusavu Fiji, a smooth and safe experience.

Set sail and we look forward to seeing you soon!

Please **CLICK** on the relevant section to continue

The sections of this e-book contain a wealth of useful information when planning your arrival into Nawi Island Marina, Savusavu Fiji.

About Us

Welcome to Nawi Island Marina, some information about us.



Services

Provides a directory of marina services and facilities.



Booking Requirements

Booking and preparing for your voyage to Nawi.



48hrs Prior

What to do 48hrs prior to arriving at Nawi Marina.



Arrival

Let's get you safely and smoothly into your berth at our marina.



Beyond Nawi

A list of services offered on the mainland in Savusavu.



Fees & Charges

Nawi Island Fees & Charges and in-house services.



Maps

Maps to assist you sailing into Savusavu.



NEXT ➔



ABOUT US

YOUR SAFE HAVEN

Designed and built to high environmental standards, our international marina sits in a natural harbour. This unique location provides protection for the marina, allowing for year round mooring and cyclone rated for up to category five.



LARGEST MARINA IN THE SOUTH PACIFIC

Home to 132 yachting berths, including 17 dedicated slips capable of accomodating superyachts up to 85m, including a seaplane dock. Nawi Island Marina is the only location of its kind in the Pacific and is the largest marina in Fiji.

FULLY SERVICED MARINA & 24/7 DEDICATED SECURITY

The fully serviced marina facilities include water, power, sewer pump-out, fuel and wi-fi. You will be in safe hands with our around the clock dedicated security and support team.



NEXT ➔



SERVICES

YACHT HELP

A Yacht Help agent is available if you wish to use their services.

nawimarina@yachthelp.com or

whatsapp +679 777 2296

www.yachthelp.com

NAUTICAL RESAURANT & SKIPPERS BAR

A culinary delight of Fijian, Indian and Western dishes to tantalise your tastebuds. Imagine cocktails and Fiji sunsets!

IMMERSION FIJI - TOURS

Your exclusive provider for all water and land based adventures.

www.immersionfiji.com

+679 789 2919

LAUNDRY SERVICE

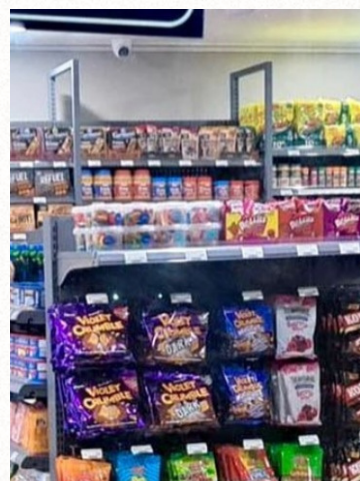
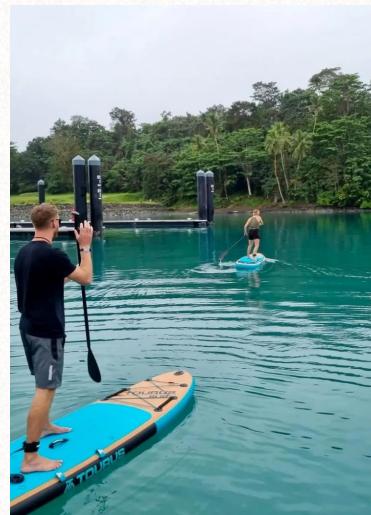
Washing, Drying and Ironing Services.

fongmaureen66@gmail.com

+679 270 4620

CONVENIENCE STORE

All your food requirements located within the marina (wine list available on request).



MARINA SERVICES

[NEXT](#) ➔



SERVICES

ISLAND SUB BAKERY

A generational family owned bakery for mouth watering pastries, cakes & subway style sandwiches.

WESTERN UNION EXCHANGE

Exchange into Fijian currency.

COFFEE ISLE CAFE

Coffee, tea and healthy food options.

BATHROOMS & RESTROOM FACILITIES

Take a hot shower in world class marina facilities.

FARMERS MARKET

Throughout the week we have a pop-up store where farmers sell their produce of seasonal fruits & vegetables.

Coming 2024

Pool Beach Club

Spa

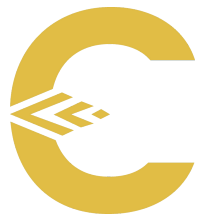
Events Bure

Boatyard facilities



MARINA SERVICES

NEXT ➔



BOOKING REQUIREMENTS

INSURANCE

All facilities at Nawi Island Marina are built up to category 5 cyclone rating. This makes Nawi marina a safe hub during adverse weather. It is mandatory for all yachts to have insurance prior to entry and crew are encouraged to have travel insurance.

BEFORE DEPARTING YOUR LAST PORT FOR NAWI MARINA

Download and complete - [Advanced Notice of Arrival Form \(ANA\)](#).

Submit to: yachtsreport@frcs.org.fj

For more information from [Fiji Revenue Customs](#) visit [here](#).

RESERVE A BERTH AT AT NAWI MARINA

Reserve a berth on reservea berth@nawiisland.com

This should be filled in, signed and submitted along with your:

- Registration document
- Insurance documents

IMPORTANT - AIS / ANCHORING PRIOR TO ARRIVAL

Your AIS must be serviceable and switched on during your entire voyage.

You must not stop or anchor at any location in Fiji waters prior to arriving at a clearance port. Customs are very strict on this and you will be liable for heavy fines if found in breach.



48HRS BEFORE ARRIVAL

Please notify Nawi Marina of your estimated time of arrival at least 48hrs prior. We will need to prepare to ensure your smooth arrival into the marina, and be ready to take you through government clearance requirements.

ARRIVAL WEEKDAYS

Contact Nawi Island Marina a minimum of 48hrs prior to arrival.

Email: reserveaberth@nawiisland.com

Contact phone: +679 992 0883

ARRIVAL ON WEEKEND/PUBLIC HOLIDAYS

If you are arriving on a weekend or public holiday, authorities will charge overtime fees.

Contact phone: +679 992 0883 / +679 229 6823 / +679 891 6890



IMPORTANT - BERTHING TIMES/ IN CASE OF EMERGENCY

Berthing at the marina is recommended during daylight hours only, so please plan accordingly.

In the event of an EMERGENCY you can call any of the above numbers.



ARRIVAL

ENTERING SAVUSAVU BAY

Upon entering Savusavu Bay, please call Nawi Island Marina on
VHF CH16

Followed by a PRIVACY SWITCH to VHF CH10

OR

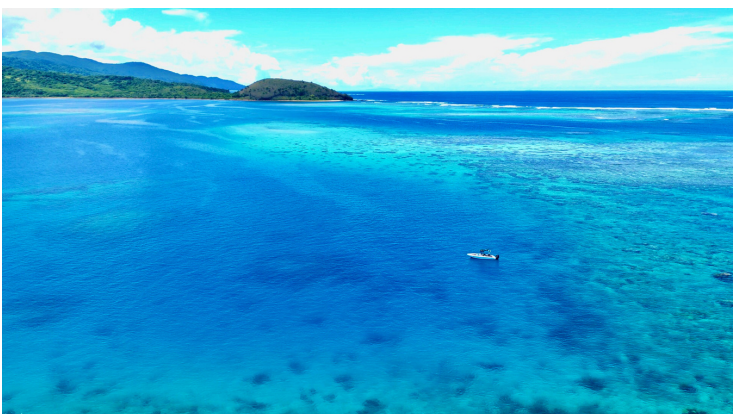
Contact phone: +679 992 0883 / +679 229 6823 / +679 891 6890

AUTHORITIES, QUARANTINE & CLEARANCE REQUIREMENTS

Nawi Island Marina will update the yacht agent (if applicable) on your arrival, otherwise Bio-Security, Customs and any relevant authorities will be notified of your arrival (only if this is your FIRST port of entry into Fiji).

Marina Management Contact (and after hours emergency)

Contact: Lindsay Lee, General Manager/Harbour Master
Email: lindsay@nawiisland.com / Phone: +679 893 1080



IMPORTANT - BOAT MAINTENANCE

There is to be NO boat maintenance allowed on the vessel while berthed at the marina (only daily upkeep).

NEXT ➡



BEYOND NAWI

OUR LOCAL TOWN has everything you need and is only a 2 minute water taxi shuttle that Nawi Island operate hourly.

We also have a dock that you can use to access town using your own dinghy.

Savusavu township is an easy walk from one end to the other.

Our friendly town offers;

- Supermarkets
- Speciality stores
- Banks - Westpac & Bank of South Pacific
- Fresh Markets
- Butcher
- Pharmacy
- Clothing stores
- Restaurants
- Fiji Gas
- Lewa's Loft Gym
- Resorts
- Hotels/Motels/Air BnB's

If you require **MEDICAL TREATMENT** we have you covered;

- Savusavu Public Hospital
+679 885 0444 / 911
- Private Doctor Clinic.
Dr Isaque Medical Centre
+679 998 1786
- Zens Private Medical Clinic
+679 799 4181/ +679 778 8800





FEEES & CHARGES

NAAMI MARINA BERTH RATES

JAN-24	BASE RATE FJ\$3.69			
MAX. VESSEL LENGTH	DAILY	WEEKLY	MONTHLY	YEARLY
Monohull	FJ\$	FJ\$	FJ\$	FJ\$
10	\$36.90	\$245.39	\$996.30	\$11,448.23
11	\$40.59	\$269.92	\$1,095.93	\$12,593.05
12	\$44.28	\$294.46	\$1,195.56	\$13,737.87
13	\$47.97	\$319.00	\$1,295.19	\$14,882.69
14	\$51.66	\$343.54	\$1,394.82	\$16,027.52
15	\$55.35	\$368.08	\$1,494.45	\$17,172.34
16	\$59.04	\$392.62	\$1,594.08	\$18,317.16
18	\$66.42	\$441.69	\$1,793.34	\$20,606.81
	DAILY	WEEKLY	MONTHLY	YEARLY
Monohull				
20	\$181.40	\$1,206.31	\$4,897.80	\$56,279.35
30	\$365.70	\$2,431.91	\$9,873.90	\$113,458.43
40	\$732.40	\$4,870.46	\$19,774.80	\$227,227.10
50	\$915.00	\$6,084.75	\$24,705.00	\$283,878.75
60	\$1,323.00	\$8,797.95	\$35,721.00	\$410,460.75
70	\$1,543.45	\$10,263.94	\$41,673.15	\$478,855.36
85	\$2,152.20	\$14,312.13	\$58,109.40	\$667,720.05
	DAILY	WEEKLY	MONTHLY	YEARLY
Multihull (X2)	\$7.38	/m		
10	\$73.80	\$490.77	\$1,992.60	\$22,896.45
12	\$88.56	\$588.92	\$2,391.12	\$27,475.74
13	\$95.94	\$638.00	\$2,590.38	\$29,765.39
14	\$103.32	\$687.08	\$2,789.64	\$32,055.03
15	\$110.70	\$736.16	\$2,988.90	\$34,344.68
16	\$118.08	\$785.23	\$3,188.16	\$36,634.32
17	\$125.46	\$834.31	\$3,387.42	\$38,923.97
18	\$132.84	\$883.39	\$3,586.68	\$41,213.61
20	\$362.80	\$2,412.62	\$9,795.60	\$112,558.70
30	\$731.40	\$4,863.81	\$19,747.80	\$226,916.85
40	\$1,464.80	\$9,740.92	\$39,549.60	\$454,454.20

Berth Rates include (in-house guests only):

- Water
- Dinghy dock
- 1hr free Wi-Fi daily
- Shuttle services to and from town
- Bathroom facilities
- Garbage disposal in bins provided (in garbage bags)

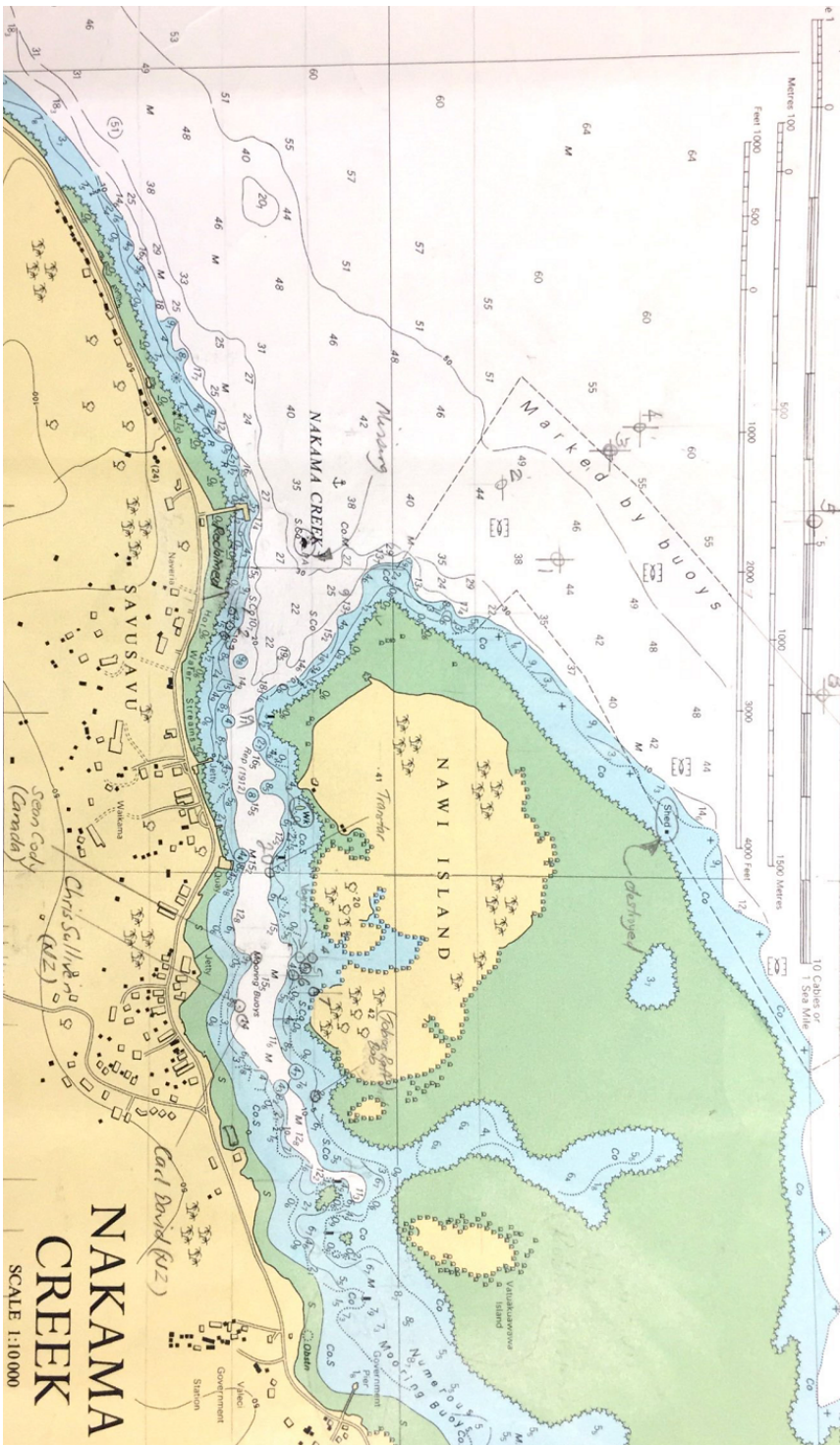
Charged services available:

- Electricity
- Wi-Fi (after 1hr Free)
- Sewer pump-out
- Laundry services
- Fuel (per litre)




MAPS

Follow the **red** and **green** navigational markers as you enter the Nakama Creek towards the Nawi Marina entrance. Here you will be guided by our dock master to your designated berth.



ARRIVING AT NAWI MARINA

NEXT ➔

A woman with sunglasses on her head is swimming in a pool of water at the base of a waterfall. The waterfall is cascading over dark rocks, and the surrounding area is covered in dense green tropical vegetation. The scene is bright and sunny, with the water reflecting the light.

**There is just
something special
about Nawi Island.**

**We look forward to
your stay in the
hidden paradise of
Savusavu, Fiji.**

N A W I I S L A N D . C O M