



FIJI ARRIVAL PROCEDURE

Bula Re! Thank you for choosing Nawi Marina - the most luxurious modern marina and port of entry in the South Pacific. Nawi Island offers 137 yacht berths including a dedicated super yacht section with sea plane dock. We are delighted to be your gateway to untouched Fiji - some of world's most beautiful cruising grounds.

Fiji Revenue & Customs (FRCS) require you to have submitted an 'Advance Notice of Arrival' form 'C2C' form for each crew member 48 hours prior to arrival. Please copy grace@nawiisland.com and we can assist you. The requirements include a scanned photo of the vessel and copy of the captain's passport biodata page. Failure to do this may result in a refusal of entry or FJD 4,000 fine. You are requested to have activated your AIS whilst in Fiji EEZ waters. You may NOT anchor anywhere prior to formal clearance procedures.

We are delighted to welcome you to Fiji and proudly introduce our marina facilities - including our brand new state-of-the-art Valaga Boat Yard.

On arriving in Savusavu Bay contact Nawi on VHF16 /CH6 +679 992 0883/6823 and await instruction.

Clearance into Fiji takes place in steps 1-3 and no one may leave the vessel prior to customs clearance.

1. Health

Fly a clearly visible yellow Q flag until cleared by Health authorities. On arrival into Savusavu request assistance from Nawi harbour master to contact 'Health, Customs and Biosecurity' for clearance.

2. Biosecurity

Yachts arriving in Fiji A full list of biosecurity goods must be declared. Biosecurity clearance costs FJD 202.00 which must be paid at the office.

3. Customs & Immigration

Clearance report from departing country is required. All prohibited items such as weapons, pornography and drugs must be declared. All crew members must have valid passports with 6 months remaining. Visas on arrival to remain in Fiji for 4 months will be granted. Check eligibility for pre-arrival visa : immigration@govnet.gov.fj.

4. Apply for Fiji Waters Cruising Permit

Your vessel must now apply for a Fiji waters Cruising Permit. It may NOT leave the marina until you have been issued with this. Valid for 6 months these permits are free of charge. The captain of the yacht is required to report the vessel's position and cruising plans weekly to : yachtsreport@frcs.org.fj. Currently yachts can remain in Fiji for 54 months / 6 months extension.



Introducing Nawi Island

We are the biggest marina in the South Pacific with 137 berths, including several for super yachts between 25 to 85 metres LOA and features seaplane dock.

Constructed according to Australian standards Nawi is certified to withstand up to Category 5 cyclones.

Our facilities include fuel services, garbage disposal, sewer pump-out, 240 v power, fresh water, high speed internet, spacious tropical bathrooms, 24 hour CCTV security.

Nawi also provides a complimentary shuttle service to Savusavu town and a dinghy dock.



Our horseshoe shaped marina is nestled into lush tropical jungle in Nakama Creek, Savusavu Bay opposite the main drag of the town - just a 5 minute taxi ride from the airport. Described as the 'hidden paradise' of Fiji, Savusavu is the gateway to some of the most pristine islands in the Fijian archipelago - the Lau Group, Lomaviti, Taveuni and the Ringgolds. Expect white sand beaches, turquoise ocean, technicolour coral reefs and welcoming local villages. Savusavu is the home of waterfalls, traditional Fijian hospitality and rainforests.

Nawi Island Marina offers a full range of first class services designed to assist you in maintaining your vessel and provisioning for cruising the islands. Leading marine supplies and agent, 'Yacht Help' are conveniently located onsite. Contact: +679 777 2296

The Valaga Boat Yard (pronounced Vah - lang - ah) provides hard stand facilities for 150 yachts and spans 11 acres. Located 5 minutes from Nawi Marina at Valaga Bay it is the sole full-service boatyard in Northern Fiji. The travel lift (the 75BFM11) is the largest in Fiji, with a 75 tonne capacity able to lift vessels with a beam up to 8.6 metres.

Facilities : wash bay, engineering and welding workshop, paint and antifouling, office, restroom and lounge, 24/7 security, gas and dive tank fills can be arranged.



Stay & Play

The luxurious private beach club is complimentary to Nawi's marina guests who we invite to relax on sun loungers and in our private cabanas.

Nawi Activities Center, providing of adventure tours and water sports on Korovesa. Located on the island at retail 2 building that offers snorkelling, kayaking trips, deep sea fishing, waterfall excursions and more. Contact Ricky: +679 8916894 or visit our activities center.

Dining options include the ability to savour delectable Italian and Mexican cuisine and refreshing cocktails at the Domoni waterfront Dinning and Mexican grill restaurant.

Island Sub and Coffee Isle also offer lighter bites and beverages.

Nawi Island has shopping options including a convenience store, bakery and marine supplies shop, Yacht Help, a spa and a laundry.

Savusavu is a small and friendly waterfront town and easily walked in 10 minutes. Here you will find a large local produce market selling tropical fruits and vegetables, chemists, car hire options, a taxi stand, a kava, seafood and handicraft market, mobile phone services, doctors and ATMs. Nawi offers a CCTV monitored complimentary dinghy dock at Waitui Marina.



Savusavu Useful Information

Nawi's complimentary shuttle is available or you can use our dinghy dock.

Vodafone & digital SIM cards for your devices

BSP and Westpac ATMs

DHL is available at Waitui Marina

Savusavu Post Office

Large fruit and vegetable market

Several supermarkets - cafes - bread shops

Taxi stand and bus station

Chemists

Medical Services

Savusavu public hospital/dentist +679 885 0444 / 0911

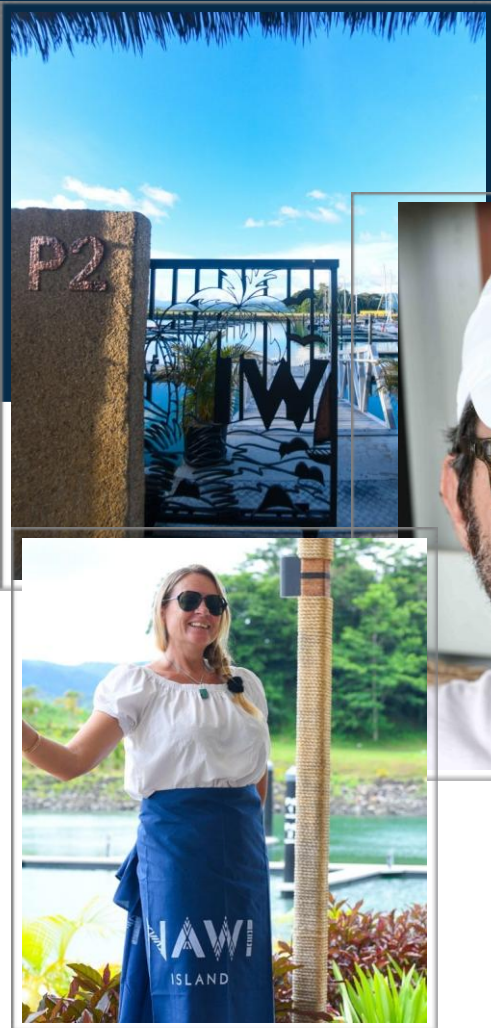
Dr Isaque Medical Centre +679 998 1786

Zen's Private Medical Clinic. +679 799 4181





Staying in Nawi Island Marina



Our luxurious and state-of-the-art marina is your gateway to cruising the untouched North of Fiji. We are delighted you have chosen Savusavu as your port of call. This welcome pack will give you all you need to know about Nawi Island - our facilities and services - maps of Nawi and the local area, as well discount vouchers so you can treat yourself at our exclusive onsite businesses.

Nawi Island is much more than a marina. Our marina, nestled into the heart of the rainforest in Savusavu, offers a beach club, spa, Immersion Fiji - our water sports and adventure tour providers, the Nautical bar as well as our barista and bakery.

Follow us on FB and Instagram or look at the events board outside the Marina office for offers and activities. You can also visit our website www.nawiislandmarina.com to sign up to our newsletter.

1. GETTING YOU ONLINE

Nawi offers high speed Wifi. Visit the marina office for your complimentary 1 hour access code. We recommend getting a SIM for both of our telecoms networks, Vodafone and Digicel, to ensure you are covered in most anchorages in the North of Fiji.

2. FIJI CRUISING PERMIT

Your vessel must now apply for a Fiji waters Cruising Permit. It may NOT leave the marina until you have been issued with this. Valid for 6 months these permits are free of charge. The captain of the yacht is required to report the vessel's position and cruising plans weekly to : yachtsreport@frcs.org.fj. Currently yachts can remain in Fiji for 54 months / 6 months extension.

3. CREW

Crew departures and arrivals must be done using the 'authority to disembark' immigration form.

5. KAVA

Performing 'sevu sevu' must be done when you visit a Fijian village or wish to anchor in its bay. The local market has kava section at which you can purchase bundles of kava.



Marina Berth Rate Sheet

Aug-25

Max. Vessel Length in Meters	Daily Rate meter per	Weekly Rate per meter (5% Discount)	Monthly Rate per Meter (10% Discount)	Yearly Rate per Meter (15% Discount)
Monohull	FJ\$	FJ\$	FJ\$	FJ\$
0 - 9.99	\$5.00	\$33.25	\$135.00	\$ 1,574.00
10 -18.99	\$5.00	\$33.25	\$135.00	\$ 1,574.00
	Daily Rate meter per	Weekly Rate per meter (5%)	Monthly Rate per meter (10%)	
Monohull				
19 - 29.99	\$10.00	\$66.50	\$270.00	
30 - 39.99	\$15.00	\$99.75	\$405.00	
40 - 49.99	\$20.00	\$133.00	\$540.00	
50 - 59.99	\$25.00	\$166.25	\$675.00	
60 - 69.99	\$25.00	\$166.25	\$675.00	
70 - 79.99	\$25.00	\$166.25	\$675.00	
80 - 89.99	\$30.00	\$199.50	\$810.00	
	Daily Rate per meter	Weekly Rate per meter (5% Discount)	Monthly Rate per meter (10% Discount)	
Multihull (X2)				
0 - 9.99	\$10.00	\$66.50	\$270.00	
10 - 18.99	\$10.00	\$66.50	\$270.00	
	Daily Rate meter per	Weekly Rate per meter (5% Discount)	Monthly Rate per meter (10% Discount)	
Multihull (X2)				
19 - 29.99	\$20.00	\$133.00	\$540.00	
30 - 39.99	\$30.00	\$199.50	\$810.00	
40 - 49.99	\$40.00	\$266.00	\$1,080.00	

Marina Code of Conduct

- ◆ You must not discharge grey water into the marina
- ◆ You must not discharge any fuel into the marina
- ◆ Keep your vessel secured properly at all times
- ◆ You must provide insurance documents for your vessel to the marina office
- ◆ Fishing in the marina is prohibited
- ◆ Sanding, sandblasting, painting, hot works, welding and hull cleaning is prohibited in the marina
- ◆ Do not allow any contractors or tradespeople into the marina not approved by Nawi Island
- ◆ Visitors to the marina must be signed in at the security booth
- ◆ Children are your responsibility. Any damage to property incurred by your children will be charged to you
- ◆ No unlawful activities from, or on the vessel berth within Nawi.

Nawi Island Accommodation Bure



Experience the heart of Savusavu in Comfort and style on korovesa island at Nawi Island marina.

- 3 private, air-conditioned bures located at the marina central facility
- Ocean views and tropical surroundings
- Walking distance to marina services and activities

Perfect for overnight stays or short retreats

